

Energom-5001-pH-ORP-2

Online double channel PH, ORP, PH/ORP controller

Character & Application:

- Online **double channel** PH/ORP controller
- **Three-point calibration** function, automatic identification of calibration liquid and the error calibration
- Programmable **manual /Auto temperature compensation**, the adaptation of various types of PH/ORP electrode
- High/Low limit relay control output signal,
- Isolation reversible Migration **4-20mA current output** signal
- **Modbus RS485 RTU** communication output signal,
- ABS Enclosure protection grade:**NEMA4X/IP65**.
- **AC input be fused** and **self-recovery** function
- **ESD** over voltage protection is available
- Widely used for chemical, pharmaceutical, printing and dyeing, metallurgy, electroplating, environmental protection, water treatment, aquaculture and other process detection and control of PH/ ORP value.



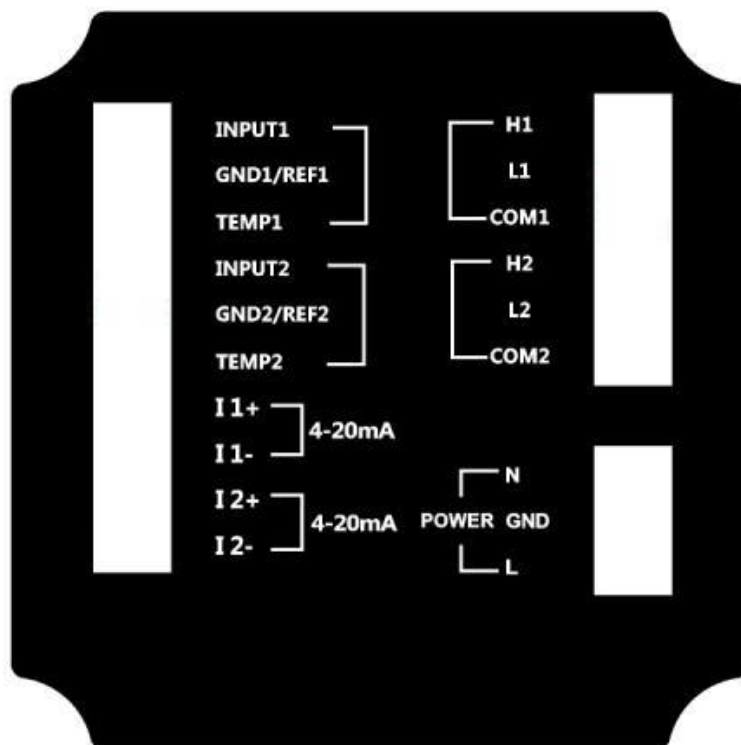
Main Technique Specifications:

Model Function	Energom-5001-pH-ORP- double channel PH/ORP Controller
Range	PH: 0.00~14.00 pH , ORP: -1200~+1200 mV
Accuracy	pH : ±0.1 pH , ORP: ±2mV
Temp. Comp.	0~100 °C, manual / automatic (NTC 10k, PT100, PT1000 RTD)
Operation Temp.	0~60°C (Match Normal temp sensor) 0~100°C(Match high temp sensor)
Sensor	Two/ Three Composite PH sensor, ORP sensor
Calibration	4.00; 6.86; 9.18 Three Point Calibration
Display	128 * 64 dot matrix LCD
Current output signal	Isolation,Reversible Transferable double 4-20mA signal output, max circle resistance 750Ω
Control output signal	High and low limit alarm contact each group (3A/250 V AC) ,
Communication signal	Modbus RS485, baud rate: 2400, 4800, 9600
Power supply	AC220V±10%, 50/60Hz (standard),
Working environment	Ambient Temp. 0~70°C, Relative Humidity ≤95%
Overall dimensions	96×96×130mm (H X W X D)
Hole dimensions	92×92mm (H X W)
Installation Mode	Panel Mounted (Embedded)

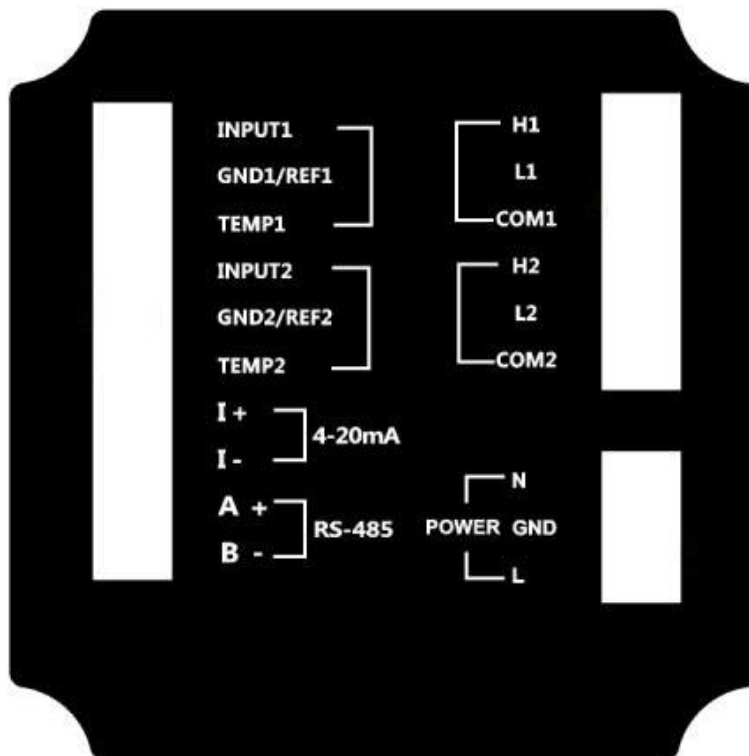
Front View: Double channel PH and ORP, PH and PH display



Back View: High/Low limit, 4-20mA and Modbus RS485 output



Two group High/Low limit, Two group 4-20mA output signal



Two group High/Low limit, One 4-20mA and one RS485 output signal

Match PH sensor and ORP sensor: Temp Range: 0-60°C



Match PH sensor and ORP sensor- High temp.: 0-100°C



High Temp. PH,ORP sensor cover

