

## EYD-33 series

### Pressure Transmitters



#### Description

EYD33 Flush Diaphragm Pressure Transmitter is made from high-quality silicon piezoresistive sensor. The piezoresistive sensor is packaged in stainless steel housing. with flush diaphragm has been specifically designed for the measurement of viscous, paste-like, adhesive, crystallising, particle-laden and contaminated media. Through its optimised design, the flush process connection enables cleanability with the wetted diaphragm integrated into the process. Low-maintenance and trouble-free pressure measurement is thus also guaranteed in critical applications with frequently changing media. Specifically for the food and beverage industry.

#### Features

- Adopt all stainless steel structure
- 4~20mA is convenient for remote transmission
- Piezoresistive pressure sensor design
- Variety of Pressure & Electrical connections
- Excellent anti-jamming capability
- Overvoltage overcurrent protection, reverse polarity protection

#### Application

- Process control systems
- General industrial applications
- Food and beverage industry
- Filling and packing machinery
- Dosing technology
- Level measurement
- Hydraulic and pneumatic control system

## Specifications

Technical indicators:	
Media:	Oil, water, gas and compatible with 316L stainless steel
Pressure:	0 ~ 10MPa
Overload:	2 times (10MPa or less); 1.5 times (10MPa or more)
Accuracy:	$\pm 0.1\% \text{ FS}$ , $\pm 0.2\% \text{ FS}$ , $\pm 0.5\% \text{ FS}$ , $\pm 1\% \text{ FS}$
Nonlinear:	$<\pm 0.2\% \text{ FS}$
Hysteresis and repeatability:	$\leq \pm 0.1\% \text{ FS}$
Long-term stability:	$\leq \pm 0.1\% \text{ FS / year}$
Zero drift:	$\leq \pm 0.02\% \text{ FS / } ^\circ\text{C}$
Response time:	$\leq 500\text{ms}$ (standard)

## Electrical parameters:

Output:	Current 2-wire: 4 ~ 20mA Voltage 3-wire : 0 ~ 5V; 0 ~ 10V; 1 ~ 5V; 1 ~ 10V Option:RS 485 ,hart
Supply voltage:	DC24V (12 ~ 32VDC, less may contact)
Load capacity:	current output: $\leq 500\Omega$
Voltage output:	$\leq 250\Omega$ output impedance
Electrical connection:	Standard for Hersman, optional direct outlet or M20 PIN Aviation

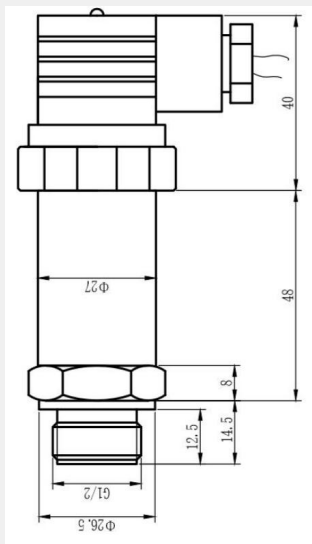
## Materials:

Wetted parts:	316L stainless steel
Shell:	304
Seals:	Viton, optional: EPDM, NBR
Diaphragm:	316L stainless steel

## Other specifications:

Process connection:	M20 $\times$ 1.5 or G1/2
Material:	316L stainless steel wetted materials; Shell: 304
Protection class:	IP 65
Medium temperature:	-30 ~ 80 $^\circ\text{C}$
Ambient temperature:	-40 ~ 80 $^\circ\text{C}$
Storage temperature:	-40 ~ 100 $^\circ\text{C}$
Earthquake:	108 RMS (25 ~ 2000HZ)
Current Limit:	The maximum current-24mA; voltage-largest 5mA
Certification:	CE

## Dimensions



Product model							
Model	EYD-33						
	Range	K:0...X kPa; P: PSI; K: kPa,; B: bar; M:MPa; m: mH2O					
	Precision	1: 0.25%FS 2: 0.5%FS; 3: 0.1					
	Output	A: 4-20mA V1: 0.5-4.5V; V2: 0-5V; V3: 1-5V; V4: 0-10V; ; S0: Other					
	Power	P1: 9-32VDC; P2:5VDC ; P3: 12-32VDC; P4: 3VDC; P0: others					
	Interface	G 1 G 1 / 2; M1 M 20*/1.5 M0:customized					
					Connection	W1:Hirschman W2:Directly wire W3:M12 plug	
EYD-33	100P	1	A	P1	G1	W1	Vendor Code

### Selection tips:

1. The tested medium should be compatible with the materials in contact with the product.
2. For other special requirements, please consult us and indicate what you need in the orders.