



# ADTEK

MADE IN TAIWAN

## ADTEK PRODUCT RELATED TO PROCESS CONTROL SYSTEM

EXCELLENT SERVICE · BEST SUPPORT



Cloud Computing



USB



PL-STU  
Industrial comm  
& Converters

RS 485  
Communication



DL1S  
Data Logger

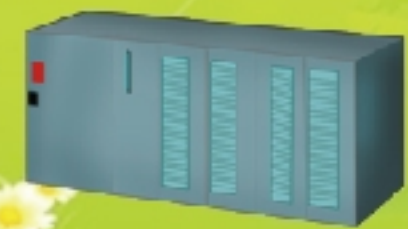
RS 485  
Communication



AEM-DRA / PA-MTS



PL-ANET  
Industrial comm  
& Converters



PLC / DCS / DOC



Recorder



AT / ST / SD  
Process Signal Transmitter



CSN / CM1 / CM3-VA / CS1 / CS2 / CS3 / CS2-TM  
CS2-CT / CS2-MC / A6-SG / A7-SG / TC / VAW / VAM

Digital indicator  
& Controller

SIGNAL  
OUTPUT

SIGNAL OUTPUT



T&H, Pressure, Liquid Level, CO, CO2, PM2.5 VOC, Proximity, Photoelectric,  
DC Power Supply, Sensing Transducers



Authorized Distributor

Москва, м. Авиамоторная, пр-д Завода Серп и Молот

тел: +7(495)510-11-04

e-mail: zakaz@energometrika.ru

web: www.energometrika.ru

# ЭНЕРГОМЕТРИКА

www.energometrika.ru

# CS1 / **CS1 series**

## 4 2/3 Digits Programmable Panel Meter

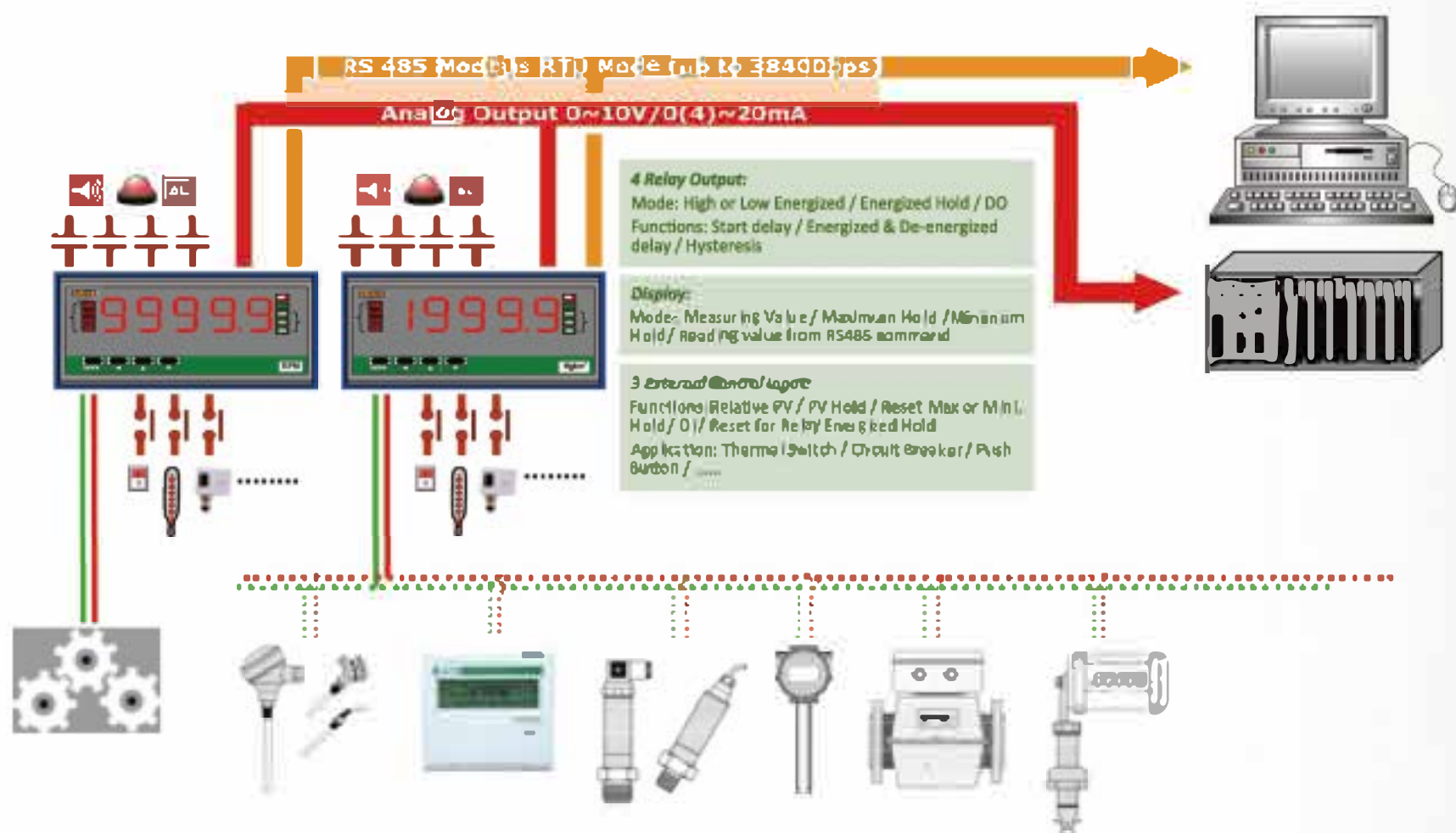
AC/DC Voltage/Current, Process Signals, Thermocouples, RTDs, Strain Gage, Potentiometers, Frequency, Resistance (2-wire), CS1 series offers versatile inputs and equip with high precision display and configurable I/O functions including a **Relay Output**, an **Analogue Output** or an **RS485 Modbus communication**.



# CS2 / **CS2 series**

## Multifunctional 4 2/3 Digits Programmable Panel Meter

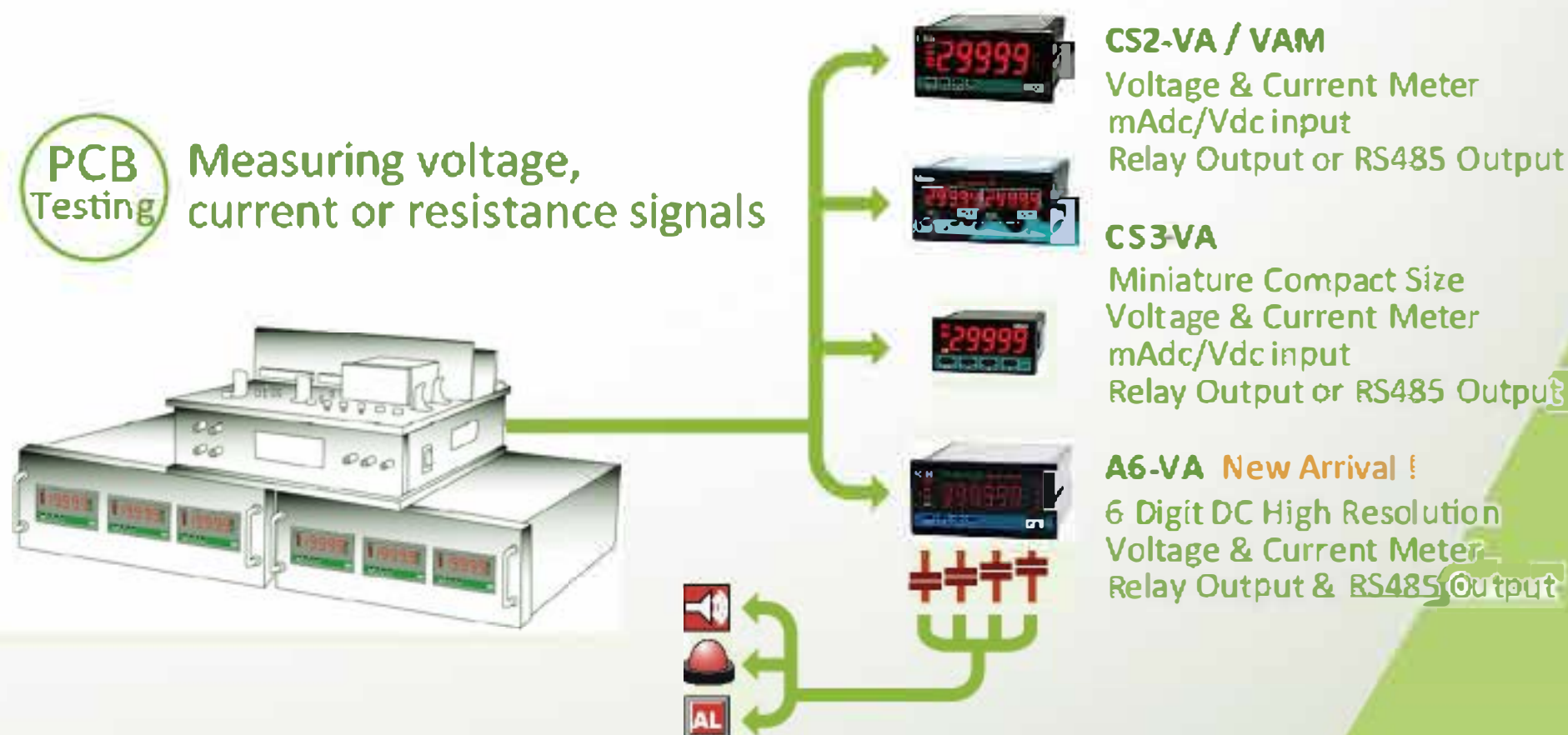
AC/DC Voltage/Current, Process Signal, Thermocouples, RTDs, Strain Gage, Potentiometers, Frequency, Resistance (2-wire), CS2 series offers different types input and also equip with high precision display and configurable I/O functions including **4 Relay Outputs**, **3 External Control Inputs**, an **Analogue Output** and an **RS485 Modbus communication**.



# CS3 / **CS3 series**

## Miniature Multifunctional 4 2/3 Digits Programmable Panel Meter

Designed with **ultra compact size (24 x 48mm)** and high precision measurement, display, communication, CS3 series offer different types signal input including AC/DC Voltage/Current, Process Signal, Frequency, Thermocouples, RTDs, Strain Gage, Potentiometers and Resistance (2-wire).



# CM1

## CM1 series

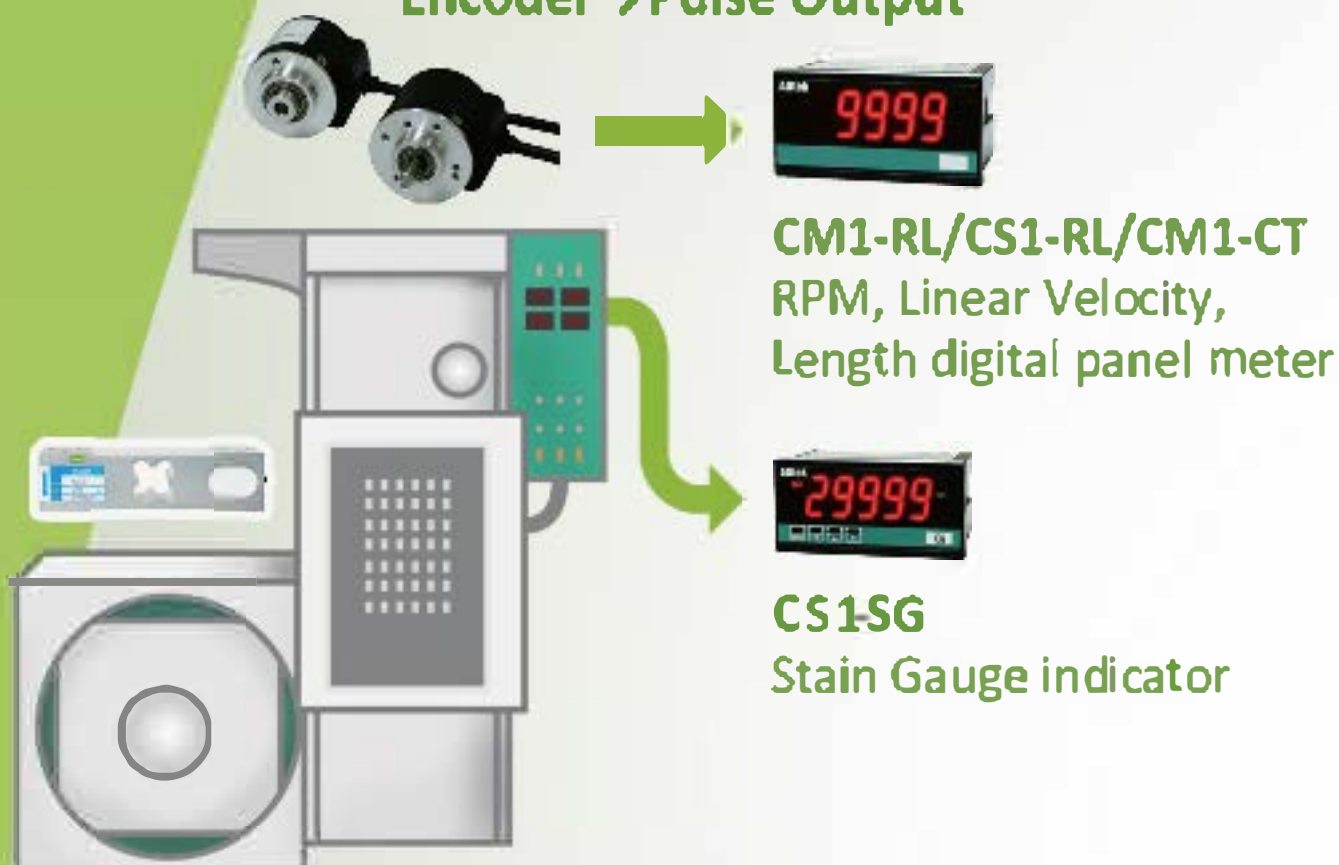
- Economic type
- 4 digits
- Programmable



CM1 series is a cost-effective controller with programmable display range, anti-interference design, high reliability, and ease of installation and usage. It also provides variety measurements in voltage, current and pulse (linear/speed/counting). Provide **2 Relay Outputs**, and an **Analogue Output** or an **RS485 port** for Modbus communication. Hidden buttons is especially useful for mechanical system control.

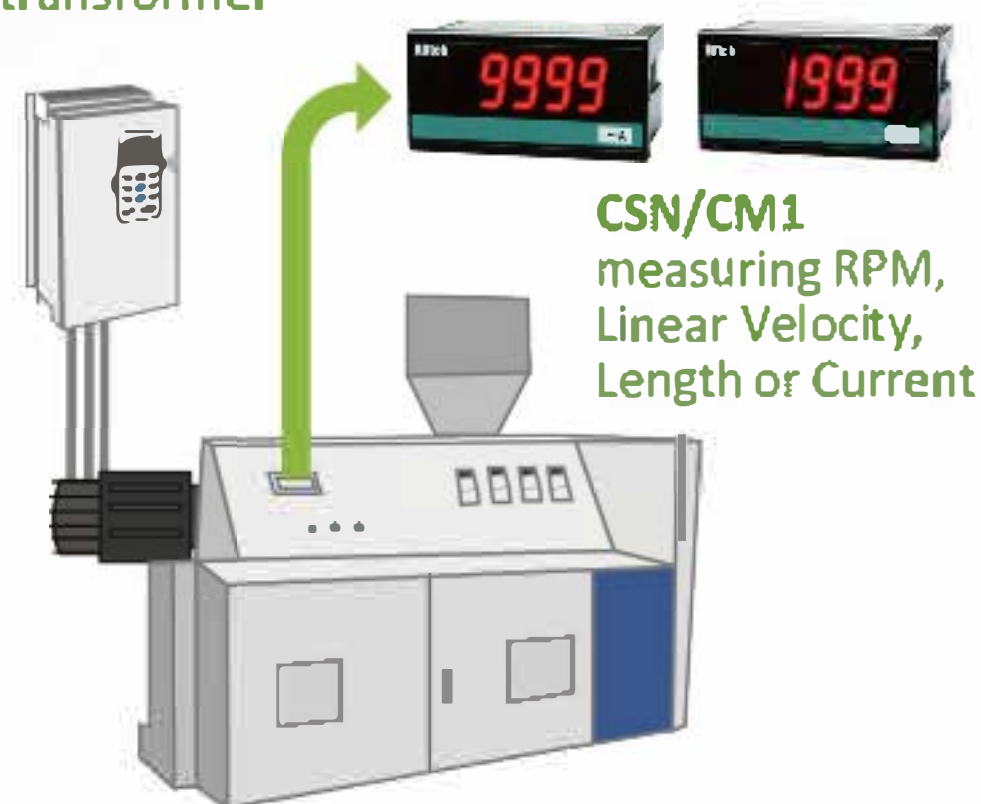
**Winding Machine / Drawing Machine**  
RPM, Linear Velocity, Length display & control

Encoder → Pulse Output



**Extruder/ Motor**  
RPM, Linear Velocity and Current display

0-10Vdc/0~1mA dc output from frequency transformer



# CM1-CT

## CM1-CT series

*Economic Type Programmable Counter*  
(3 types Panel Cut: 96x48, 72x72, 48x48)

CM1-CT is a multifunction controller with one optional selection among **2 Relay Outputs**, an **Analogue Output** and a **Modbus RS485 port** for communication. **2 pulse inputs** can use with proximity switch, photoelectric sensor or encoder et al to execute counting (add/subtract), position control, batch and batch count for display, control and remote communication. Its versatile input mode and trigger mode setting makes it easy to meet various requirements of counting and controlling.



Linear position sensor gives 100 pulses output for every 1mm movement

Using CM1-CT to count and display the position is stable and accurate.



NEW

# A6

A6 series

A6-SG 6 Digits Weighing Controller  
A6-PR 6 Digits Process Controller



Both equip with 6-digit, high resolution (24bitA/D) and versatile I/O functions interface which is used for a wide variety of process and weighing applications including filling and dispensing. Especially **zero tracking** and **Motion detection** functions can overcome zero shifting and dynamic dithering (dynamic jitter). All of these features combine to make it a powerful solution for weighing systems and process control systems

**Feeding System**  
According to the required formula, the ingredients are accurately fed into a scale, where they are precisely weighed by A6-SG.



A6-SG & A6-PR provides **4 External Control Inputs** and **multiple I/O functions** including **4 Relay Outputs**, **RS485 communication port** and **Analogue Output**.



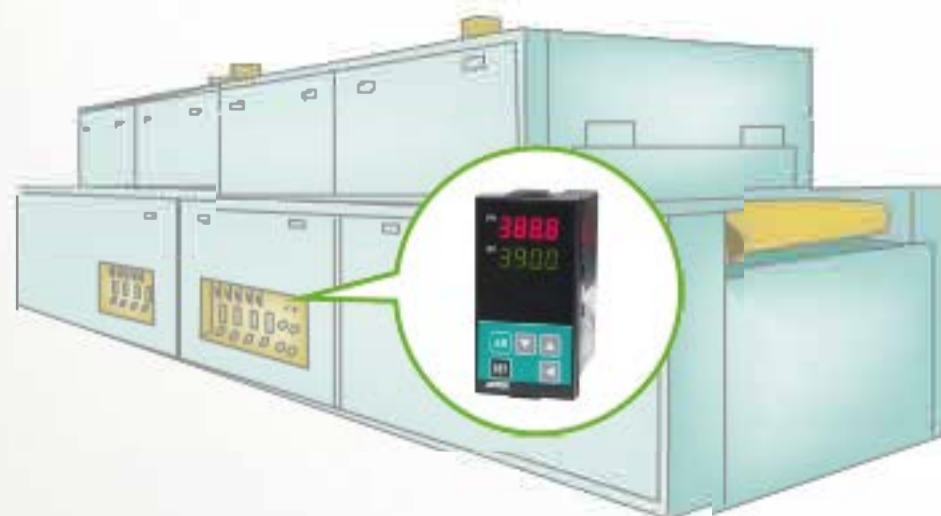
# TC

TC series

4 Digits PID Controller



Measuring T/C, PT 100Ω, mA or Vdc  
Accuracy: ± 0.5% of full scale  
Display range: -1999~9999  
Auto / manual output in standard function  
Optional functions including heating/ cooling control and Analogue Output



Temperature control in process equipment



Temperature control in heated water tank

# AT / AT series

## Isolated Converter & Distributor (17.5mm Slim type)

AT series provides wide spectrum of signals converting and isolating, such as 4~20mA, 0~10V, Thermocouples (K, J, E, T type), RTDs (PT 100Ω), strain gage, Potentiometers (3-wire), Resistance (2-wire), AC voltage and AC current. Slim type design with LED light indicators for power, input and output on the top panel; moreover, its plug-pull type wiring terminal make it easier for checking.

**\*AT-PR 0.1% Accuracy**



### PCB Plating Equipment

**conditioner / shunt**  
0~50/60/75mVdc output

**AT-VA Isolated Converter**  
0~50/60/75mVdc input  
0~10Vdc output

**PLC execute PID calculation**  
0~10Vdc input  
0~10Vdc output



**AT-PR Isolated Converter**  
0~10Vdc input, 0~10Vdc output



**CSN-VA / CM1-VA :**  
Voltage / Current display in control box  
**CS2-TM:** Amp-hour display and control  
**CPM-70:** Energy consumption monitoring and CO2 emission calculating.

# MT / MT series

## Isolated Converter & Distributor (DIN-rail mounting)

MT series provide wide spectrum of signals converting and isolating including 4-20mA, 0-10V, Thermocouples (K, J, E, T type), RTDs (PT 100Ω), Strain Gauge, Potentiometer (3-wire), Resistor (2-wire) and Frequency.



MT is used for signal converting and isolating



# ST / **ST series** LED Multifunction Signal Converter

ST series provide wide spectrum of signals converting and isolating including 4-20mA, 0-10V, Thermocouples (K, J, E, T type), RTDs (PT 100Ω), Strain Gauge, Potentiometer (3-wire), Resistor (2-wire) and Frequency.  
 With setting keys and LED display in front.  
 Equip with an **RS485 Modbus communication**, an **Analogue Output** and a **Relay Output** or Excitation Power Output.



ST series combine signal measuring, converting, isolating and controlling.



# SENSING TRANSDUCER

Provide wide spectrum of measurements including **temperature, humidity, CO, CO2, PM2.5, VOC, pressure, current, proximity, photoelectric** et al for industrial applications and automatic production line such as transportation, plastics, metallurgy, chemical industry, textile industry, tobacco, foodstuffs, printing industry et al.



# CSP-2 / **CSP-2 series** AC-DC POWER SUPPLY

Provide wide range selectable to meet various applications  
 230K~300Khr. MTBF  
**RoHs version in option**  
 Compact size with **DIN rail mounting**

Power Rating	5V	12V	24V
20 Watts	4A	x	x
25 Watts	x	2.08A	1.04A
50 Watts	* 8.0A	4.2A	2.1A
100 Watts	x	x	4.2A
150 Watts	x	x	6.25A
300 Watts	x	x	12.5A
500 Watts	x	x	20.8A

\* Choosing 50 Watts 5V/8.0A output, power rating is only up to 40 Watts

# PL / PL series Network Converter

PL series is a Network converter, converting the data into digital signals through Modbus RTU or Modbus/TCP protocol. Equip with ASIX processor, 16-bit resolution of A/D, 8 channel Analogue Inputs and 2 Digital Outputs.

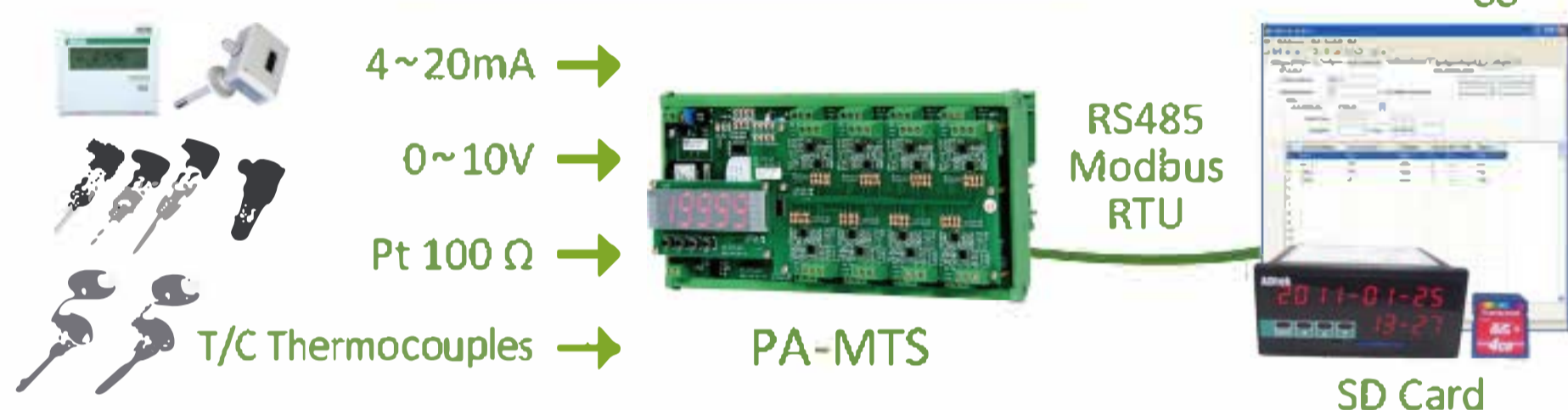


# PA / PA series Multi-Channel Converter

Provide 8 channels or 16 channels Analogue Input converting to a Modbus RS485 Output. Optional isolation for each channel is available as well. Equip with Microchip DS PIC and multiple inputs, PA-MTS makes it easier for data acquisition and controlling.



## Data Acquisition and Record



Provide 8/16 channels multiple inputs converting to RS485 communication for centralized data acquisition of testing equipment, mechanical controlling equipment and cold storage equipment.

# AEM-DR / AEM-DR series AEM-DR & AEM-DRA Multi-Circuit Power Meter

Measuring V, A, P, Q, S, PF, Hz, W, Watt-Hr, VAR, VAR-Hr

**AEM-DR** Single phase 5 circuit / 3-phase 2 circuit

\* 1MB Flash ROM

\* Modbus RS485 Communication Port

\* Modular Expansion Design-Relay Module

**AEM-DRA** Single phase 24 circuit / 3-phase 8 circuit

\* 2~31st Individual Harmonic, Demand & TOU

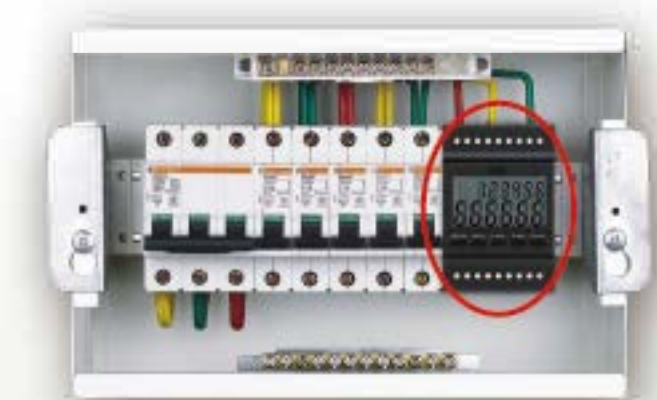
\* 128x64 dot-matrix LCM

\* 2MB Flash ROM

\* 2 Communication Ports:

1st Port: RS485 Modbus RTU

2nd Port: RS485 / LonWorks / Profibus / BACnet / Zigbee / Ethernet



## AEM-DR DIN-rail Multi-Circuit Power Meter

Measure V, A, Hz, P, Q, S, KWH for Commercial Building, Dormitory illumination, socket et al. Compact size is ideally fit indoor switchboard.

MEASUREING/INPUT	MODEL					
<b>A/B DIVISIONS</b>	<b>POWER SYSTEM APPLICATION</b>					
VOLTAGE CURRENT	Meters	CSMS-321	CSN-VA	CM1-VA		
		CS1-VA	CS2-VA	CS3-VA		
		VAM	A6-VA			
	Transducer	CA/CV-12	CA/CV-33	2A/2V	2C	
		MT-VI	NT-VA	AT-VA	ST-VA	
FREQUENCY	Meters	CSN-F	CM1-F	CS1-F	CS2-F	
	Transducer	CF	MT-FD	ST-RL		
WATT VAR	Meters	MW-5A	MWH-10A		VAW	
	Transducer	CW/CQ	CWQ	2W/2Q		
Power Factor Phase Angle	Meters	MPF-5A				
	Transducer	CPF/CPA				
Amp-Hr	Meters	CS2-TM				
	Transducer	MT-DF				
Multifuction Measurement	Meters	VAW	CPM-10	CPM-20 multifunction power meter	CPM-70/80 multifunction power meter	AEM-DR/AEM-DRA multi-circuit power meter
	Transducer	CPT multifunction power trandcuer				
<b>A/B DIVISIONS</b>	<b>ACCESSORY IN POWER SYSTEM</b>					
Current	Accessory	UA-SHT	UA-CTR	UA-CTS		
		US-CTS	US-CTA	US-CTB		
<b>C/D DIVISIONS</b>	<b>PROCESS CONTROL APPLICATION</b>					
Process (0~10V/4~20mA)	Meters	CSMS	CSN-PR	CM1-PR	TB	TC
		CS1-PR	CS2-PR	CS2-TM	CS3-PR	VAM
		A6-PR				
	Converters	MT-VI	MT-CL	NT-VA	ST-PR	ST-LC
		AT-PR	SD-PR	SD-CL	PA-MTS	
Temperature (RTD / TC)	Meters	CSMS	CSN-T	CST-321M	CST-321S	
		TB	TC	CS1-T	CS2-T	VAM
	Converters	MT-RTD	MT-TC	NT-TR	NT-TC	
		AT-TR	AT-TC	ST-T	PA-MTS	
		SD-T	TT	TTX	TT-D	
Strain Guage/Load Cell (mV/V)	Meters	CSN-SG				
		CS1-SG	CS2-SG	CS3-SG	A6-SG	A7-SG
	Converters	MT-SG	NT-SG	AT-SG		
		ST-SG	ST-LC			
Potentio-Meter (Potentiometer-3 wire)	Meters	CSN-PM				
		CS1-PM	CS2-PM	CS3-PM	VAM	
	Converters	MT-RT	NT-PM	AT-PM	ST-PM	ST-LC
Resistance (Resistance-2 wire)	Meters	CSN-RS				
		CS1-RS	CS2-RS	CS3-RS		
	Converters	MT-RT	NT-RS	AT-RS	ST-RS	ST-LC
AMP-Hr./Totalizar/ Batch/Rate (mA/V; Pulse)	Meters	CSN-H	CM1-CT			
		CS1-RL	CS2-RL	CS2-TM	CS2-CT	CS2-MC
	Converters	MT-FD	MT-DF	MT-FF	ST-RL	
RPM/Linearly Speed (Pulse)	Meters	CSN-H	CM1-RL			
		CS1-RL	CS2-RL	CS2-TM	CS3-RL	
	Converters	MT-FD	MT-FF	ST-RL		
Counter/Length (Pulse)	Meters	CM1-CT	CS2-CT	CS2-MC	CS2-TM	
	Converters	MT-FF				
<b>E DIVISIONS</b>	<b>SENSING TRANSDUCERS APPLICATION</b>					
Sensing Transducers	Temperature	TH	TS	TR	HTS	HTP
	Humidity	HTS	HTP			
	Pressure	PS	PU/PD			
	Level Sensor	LS				
	Flow Meter	WS				
	Air Quality	CO/CO2	PM2.5	VOC	BTU	
	Strain Guage	LCA	LCB	LCS	LCW	
	RPM/SPEED	SP1	SP2	PE1	PE3	ED1
	Limit/Safety	PE2				
	DIN-Rail DC Power Supply	CSP-2	CSP-3			
	Accessory	CFI				
<b>F DIVISIONS</b>	<b>RECORD</b>					
Data-logger	Meters	DL1S	ADPro software			
<b>G DIVISIONS</b>	<b>NETWORK CONVERTERS</b>					
NETWORK converter	ETHERNET	PL-SNET	PL-TNET	PL-DNET	PL-ANET	PL-RNET
NETWORK converter	RS232/422/485	PL-ST5 PA-MTS	PL-STU	PL-DTS	PL-ATS	PL-RTS