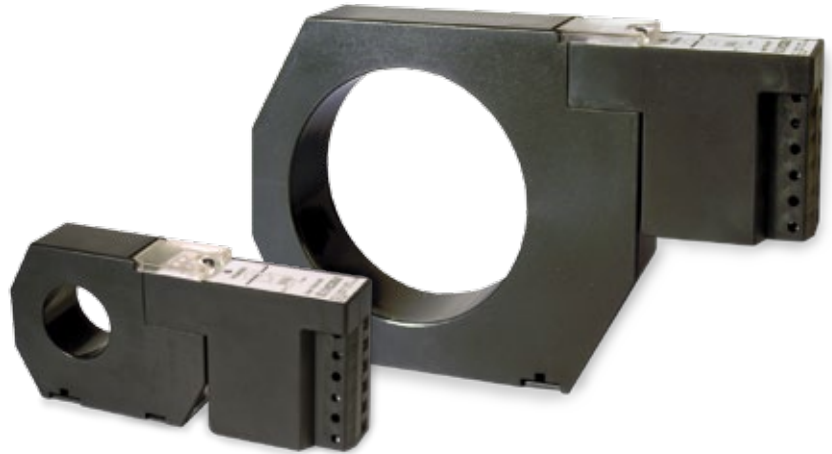


**Current transformers with converter**

# TCB 420

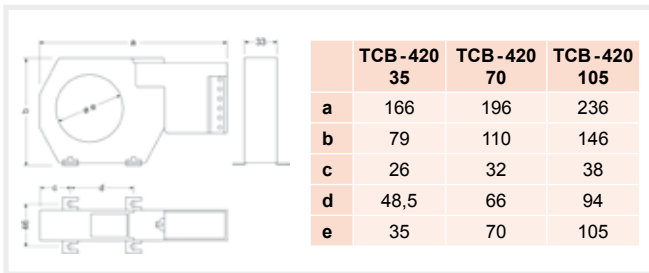
Large-scale current transformer with built-in converter


**Description**

- Built-in internal output power supply
- Needs an auxiliary power supply of 230 V ac
- Primary current: from 2.5 to 1500 A ac, depending on the type
- Secondary current: 4...20 mA
- Internal diameter / Busbar dimensions: from 35 to 105 mm

**Application**

Used in power lines to obtain a current proportional to the primary current rated at 4...20 mA in the secondary

**Dimensions**

**Features**

<b>Frequency</b>	50 / 60 Hz
Highest current in the material	0.72 kV ac
Overloads (at room temperature)	1.5 $I_n$ permanent
<b>Class</b>	
Accuracy class	$\pm 1.5\% I_n$
<b>Operating temperature</b>	-10°...+50 °C
<b>Standards</b>	
IEC 44-1, UNE 21 088-1, IEC 664, VDE0110, VDE0414, UL 94, IEC 1010-1, EN 61010-1	

**References**

Type	TCB-420 35	TCB-420 70	TCB-420 105	
inner $\varnothing$ (mm) Busbar	35	70	105	
<b>Dimensions (mm)</b>				
	a	79	110	146
	b	166	196	236
	c	33	33	33
<b>A</b>	<b>internal power supply output 4...20 mA (230 V ac auxiliary power supply)</b>			
	Code	Code	Code	
2,5	[*] M71011			
5	[*] M71012			
10	[*] M71013			
20	[*] M71014			
50	[*] M71015			
100	[*] M71016	[1] M71021		
250	[*] M71017	[*] M71022	[1] M71031	
500		[*] M71023	[*] M71032	
750		[*] M71024	[1] M71033	
1 000			[1] M71034	
1 500			[*] M71035	

For higher currents, use: transformer + converter

**Graph**
